

**NOTES:**

1. ALL FLANGES TO BE FF (FLAT FACED SLIP ON) TYPE, 150# ANSI CLASS
2. ALL TANK MATERIAL 1/4" THK. A36 CARBON STEEL.
3. ALL MOUNTING HARDWARE TO BE 304 STAINLESS STEEL. FABRICATOR TO USE AN ANTI-SEIZE COMPOUND ON STAINLESS STEEL HARDWARE TO PREVENT GALLING AT ASSEMBLY.
4. ALL TANK SHELL WELD'S TO BE CONTINUOUS AND WATERTIGHT.
5. PROTECTIVE COATING TO BE A COAL TAR EPOXY PAINT ON THE INTERIOR AND EXTERIOR FOR A TOTAL D.F.T. OF 8-12 MILS. FINISHED COLOR TO BE BLACK INSIDE AND OUTSIDE.  
SURFACE PREPARATION:  
INTERIOR AND EXTERIOR SURFACES TO BE CLEANED TO A NEAR WHITE BLAST (SSPC-SP10)
6. (2) STAINLESS STEEL LIFT OUT CHAINS SHALL BE PROVIDED. GALVANIZED AVAILABLE FOR EFFLUENT PUMP STATIONS
7. LEVEL SENSOR HEIGHT IS ADJUSTABLE FOR SPECIFIC SITE CONDITIONS AND PUMP CAPACITIES.
8. ALL PIPING TO STAINLESS STEEL
9. PUMP LIFT OUT GUIDE RAILS TO SCH. 40 STAINLESS STEEL GALVANIZED GUIDE RAILS ARE AVAILABLE FOR EFFLUENT PUMP STATIONS
10. DIMENSIONS IN BLOCKS TO BE VERIFIED AT TIME OF APPROVAL. INCLUDING ANGLE ORIENTATION OF INLET & OUTLET PIPING.
11. CONTROL PANEL TO BE SHIPPED LOOSE FOR FIELD CONNECTION TO LID AND CONDUIT FROM JUNCTION BOX.
12. ENGINEER/CONTRACTOR TO VERIFY/CONFIRM ANGULAR ORIENTATION OF INLET CONNECTION IN PLAN VIEW.
13. FOUNDATION PAD MATERIALS AND DESIGN IS DETERMINED BY THE PROJECT ENGINEER AFTER SOIL ANALYSIS IS COMPLETED
14. ANCHORS FOR ANCHORING OF TANK TO THE FOUNDATION PAD IS TO BE SUPPLIED BY INSTALLING CONTRACTOR.
15. LEVEL SENSOR HEIGHT IS ADJUSTABLE FOR SPECIFIC SITE CONDITIONS AND PUMP CAPACITIES.
16. SOLIDS HANDLING TYPE PUMPS CAN BE USED AS AN OPTION
17. ALTERNATE MATERIALS ARE AVAILABLE FOR EFFLUENT PUMP STATIONS WHERE METHANE GASES ARE NOT PRESENT

**LIFT STATION DIMENSIONS & ORIENTATIONS**

DIM-A-	DIM-B-	DIM-C-	DIM-D-	∠-E-	∠-F-
4'-0"		5'-0"		90°	270°
6'-0"		7'-0"		90°	270°

TANK WEIGHT EMPTY: \_\_\_\_\_ #

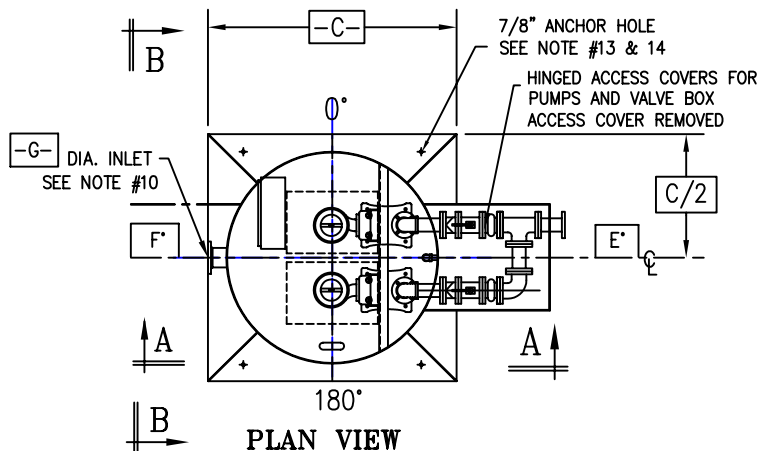
TANK WEIGHT OPERATING: \_\_\_\_\_ #

REV.	DATE	DESCRIPTION	APPROV.
△	10-9-14	UPDATED FOR WEBSITE	JJM

<p>Pollution Control Systems, Inc. 5827 Happy Hollow Rd, Suite 1B Milford, Ohio 45150 (513) 831-1165 E-mail PolConSys@aol.com</p>	<p><b>STEEL LIFT STATION -W/ GRINDER PUMPS AND DISCHARGE VALVE BOX</b></p>		
	<p>SCALE: PLOT 1/4"=1'</p>	<p>QUOTE NO.</p>	<p>PROJECT NO.</p>
<p>THIS DRAWING CONTAINS INFORMATION THAT IS PROPRIETARY TO POLLUTION CONTROL SYSTEMS AND IS NOT TO BE USED WITHOUT PERMISSION OF POLLUTION CONTROL SYSTEMS INC.</p>	<p>DRAWN BY: JJM</p>	<p>DATE: 3/27/02</p>	<p>SHEET</p>
	<p>CHECKED BY: JJM</p>	<p>DATE: 3/27/02</p>	<p>1 OF 1</p>
			<p>DRAWING NO. LS1-STL-G-VB</p>

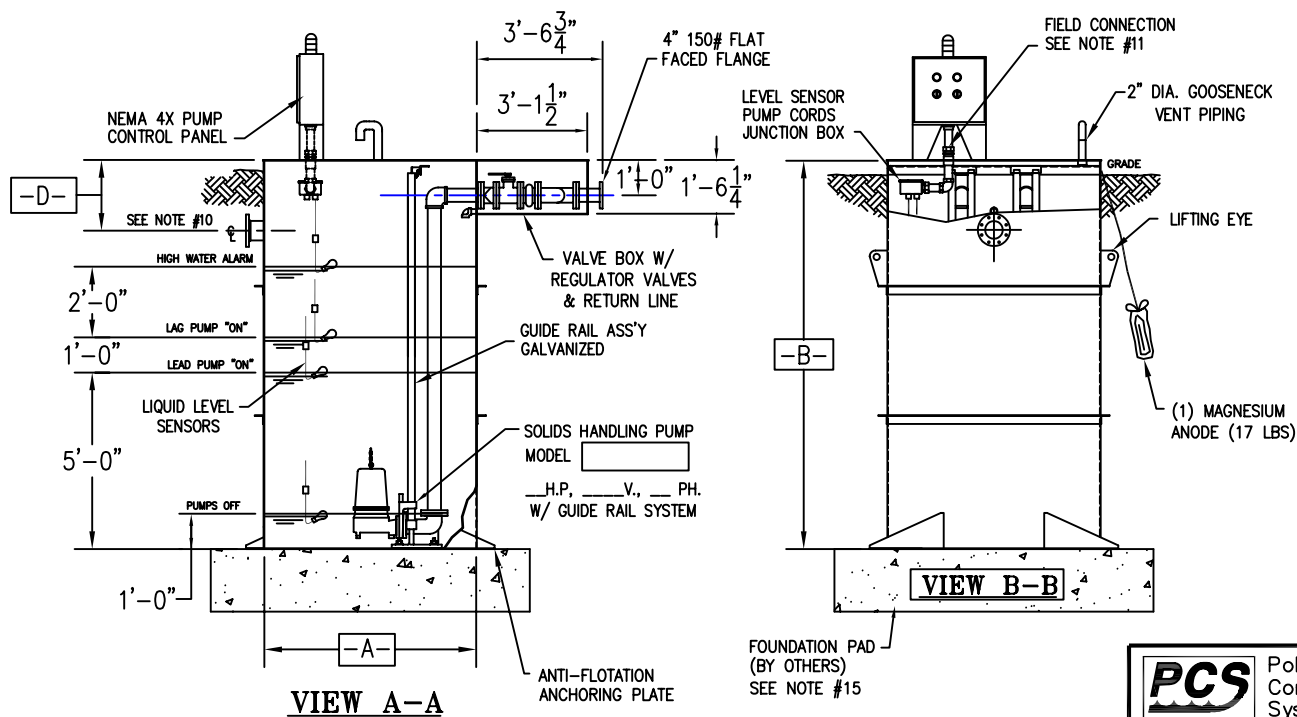
### LIFT STATION DIMENSIONS & ORIENTATIONS

DIM-A-	DIM-B-	DIM-C-	DIM-D-	∠ -E-	∠ -F-	DIA.-G-
4'-0"		5'-0"		90°	270°	
6'-0"		7'-0"		90°	270°	



### NOTES:

- ALL FLANGES TO BE FF (FLAT FACED SLIP ON) TYPE, 150# ANSI CLASS
- ALL TANK MATERIAL 1/4" THK. A36 CARBON STEEL.
- ALL MOUNTING HARDWARE TO BE 304 STAINLESS STEEL. FABRICATOR TO USE AN ANTI-SEIZE COMPOUND ON STAINLESS STEEL HARDWARE TO PREVENT GALLING AT ASSEMBLY.
- ALL TANK SHELL WELD'S TO BE CONTINUOUS AND WATERTIGHT.
- PROTECTIVE COATING TO BE A COAL TAR EPOXY PAINT ON THE INTERIOR AND EXTERIOR FOR A TOTAL D.F.T. OF 8-12 MILS. FINISHED COLOR TO BE BLACK INSIDE AND OUTSIDE.  
SURFACE PREPARATION:  
INTERIOR AND EXTERIOR SURFACES TO BE CLEANED TO A NEAR WHITE BLAST (SSPC-SP10)
- (2) STAINLESS STEEL LIFT OUT CHAINS SHALL BE PROVIDED. NO TYPE OF LIFTING EQUIPMENT IS INCLUDED
- PUMP PIPING AND GUIDE RAILS ARE AVAILABLE IN STN. STL AS AN OPTION BUT MUST BE SPECIFIED AT TIME OF ORDER
- ALL PIPING TO BE SCH.40 BLACK STEEL PAINTED.
- PUMP LIFT OUT GUIDE RAILS TO SCH. 40 GALVANIZED STEEL.
- DIMENSIONS IN BLOCKS TO BE VERIFIED IF AT TIME OF APPROVAL.
- CONTROL PANEL TO BE SHIPPED LOOSE FOR FIELD CONNECTION TO LID AND CONDUIT FROM JUNCTION BOX.
- ENGINEER/CONTRACTOR TO VERIFY/CONFIRM ANGULAR ORIENTATION OF INLET CONNECTION IN PLAN VIEW.
- FOUNDATION PAD MATERIALS AND DESIGN IS DETERMINED BY THE PROJECT ENGINEER AFTER SOIL ANALYSIS IS COMPLETED
- ANCHORS FOR ANCHORING OF TANK TO THE FOUNDATION PAD IS TO BE SUPPLIED BY OTHERS



TANK WEIGHT EMPTY: #

TANK WEIGHT OPERATING: #

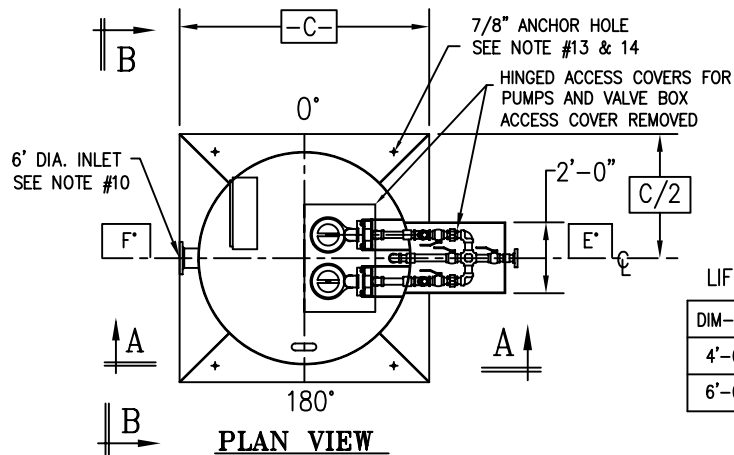
REV.	DATE	DESCRIPTION	APPROV.
△	10/9/14	REVISED FOR WEBSITE	JJM

**PCS** Pollution Control Systems, Inc.  
5827 Happy Hollow Rd, Suite 1B  
Milford, Ohio 45150  
(513) 831-1165  
E-mail PolConSys @ aol.com

THIS DRAWING CONTAINS INFORMATION THAT IS PROPRIETARY TO POLLUTION CONTROL SYSTEMS AND IS NOT TO BE USED WITHOUT WRITTEN PERMISSION OF POLLUTION CONTROL SYSTEMS INC.

STEEL LIFT STATION -W/ FLANGED PUMPS  
A-10 SERIES BASE AND DISCHARGE VALVE BOX

SCALE: PLOT 3/16"=1'	QUOTE NO.	PROJECT NO.
DRAWN BY: JJM	DATE: 3/27/02	SHEET
CHECKED BY: JJM	DATE: 3/27/02	1 OF 1
		LS2-STL-S-VB

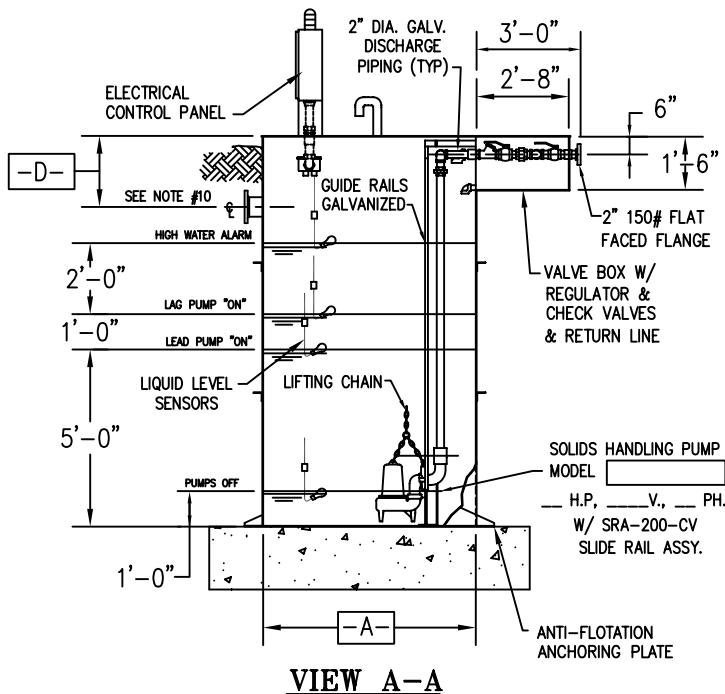


LIFT STATION DIMENSIONS & ORIENTATIONS

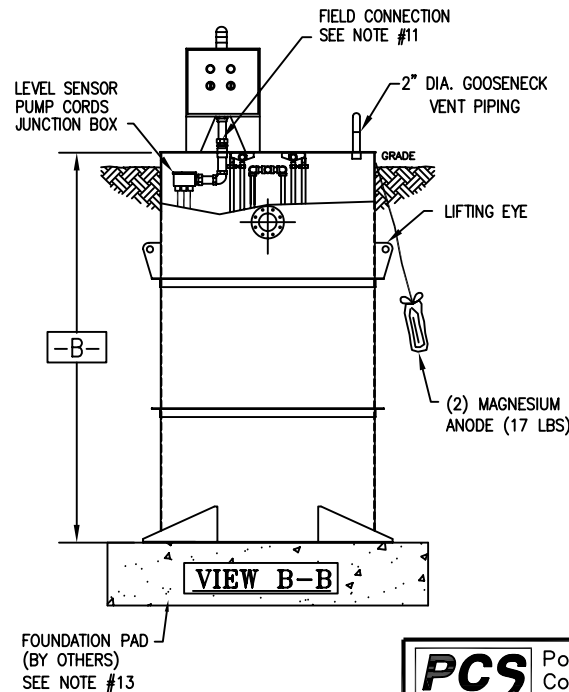
DIM-A-	DIM-B-	DIM-C-	DIM-D-	∠-E-	∠-F-
4'-0"		5'-0"		90°	270°
6'-0"		7'-0"		90°	270°

**NOTES:**

1. ALL FLANGES TO BE FF (FLAT FACED SLIP ON) TYPE, 150# ANSI CLASS
2. ALL TANK MATERIAL 1/4" THK. A36 CARBON STEEL.
3. ALL MOUNTING HARDWARE TO BE 304 STAINLESS STEEL. FABRICATOR TO USE AN ANTI-SEIZE COMPOUND ON STAINLESS STEEL HARDWARE TO PREVENT GALLING AT ASSEMBLY.
4. ALL TANK SHELL WELD'S TO BE CONTINUOUS AND WATERTIGHT.
5. PROTECTIVE COATING TO BE A COAL TAR EPOXY PAINT ON THE INTERIOR AND EXTERIOR FOR A TOTAL D.F.T. OF 8-12 MILS. FINISHED COLOR TO BE BLACK INSIDE AND OUTSIDE. SURFACE PREPARATION: INTERIOR AND EXTERIOR SURFACES TO BE CLEANED TO A COMMERCIAL BLAST (SSPC-SP6)
6. (2) GALVANIZED LIFT OUT CHAINS SHALL BE PROVIDED. NO TYPE OF LIFTING EQUIPMENT IS INCLUDED
7. PUMP PIPING, GUIDE RAILS AND LIFTING CHAIN ARE AVAILABLE IN STN. STL AS AN OPTION BUT MUST BE SPECIFIED AT TIME OF ORDER
8. ALL PIPING TO BE SCH.40 BLACK GALVANIZED STEEL.
9. PUMP LIFT OUT GUIDE RAILS TO SCH. 40 GALVANIZED STEEL.
10. DIMENSIONS IN BLOCKS TO BE VERIFIED IF AT TIME OF APPROVAL, TANKAGE AND PIPING WILL BE FABRICATED TO THE DIMENSIONS AND ORIENTATION AS SHOWN UNLESS NOTED ON APPROVAL.
11. CONTROL PANEL TO BE SHIPPED LOOSE FOR FIELD CONNECTION TO LID AND CONDUIT FROM JUNCTION BOX.
12. ENGINEER/CONTRACTOR TO VERIFY/CONFIRM ANGULAR ORIENTATION OF INLET CONNECTION IN PLAN VIEW.
13. FOUNDATION PAD MATERIALS AND DESIGN IS DETERMINED BY THE PROJECT ENGINEER AFTER SOIL ANALYSIS IS COMPLETED
14. ANCHORS FOR ANCHORING OF TANK TO THE FOUNDATION PAD IS TO BE SUPPLIED BY OTHERS



VIEW A-A



VIEW B-B

TANK WEIGHT EMPTY: #  
 TANK WEIGHT OPERATING: #

REV.	DATE	DESCRIPTION	APPROV.
10-9-14		UPDATED FOR WEBSITE	JJM

**PCS** Pollution Control Systems, Inc.  
 5827 Happy Hollow Rd, Suite 1B  
 Milford, Ohio 45150  
 (513) 831-1165  
 E-mail PolConSys@aol.com

THIS DRAWING CONTAINS INFORMATION THAT IS PROPRIETARY TO POLLUTION CONTROL SYSTEMS AND IS NOT TO BE USED WITHOUT WRITTEN PERMISSION OF POLLUTION CONTROL SYSTEMS INC.

STEEL LIFT STATION -W/ NPT SEWAGE PUMPS  
 W/ GUIDE RAILS AND DISCHARGE VALVE BOX

SCALE:	QUOTE NO.	PROJECT NO.
PLOT 3/16"=1'		
DRAWN BY:	DATE:	SHEET
JJM	3/27/02	
CHECKED BY:	DATE:	1 OF 1
JJM	3/27/02	LS3-STL-S-VB